



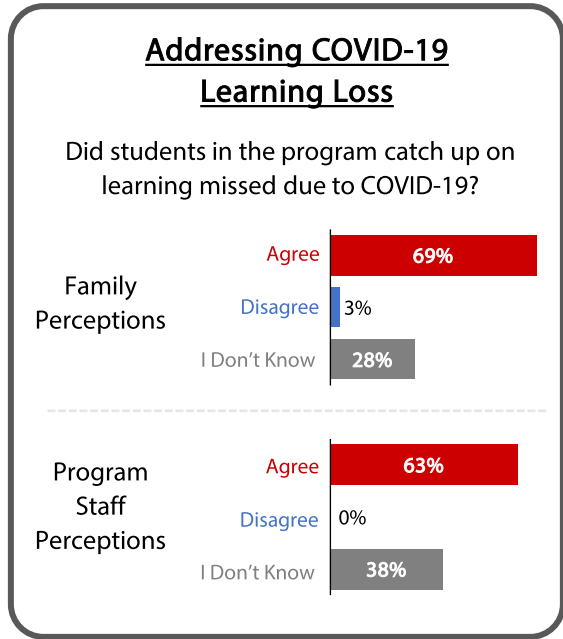
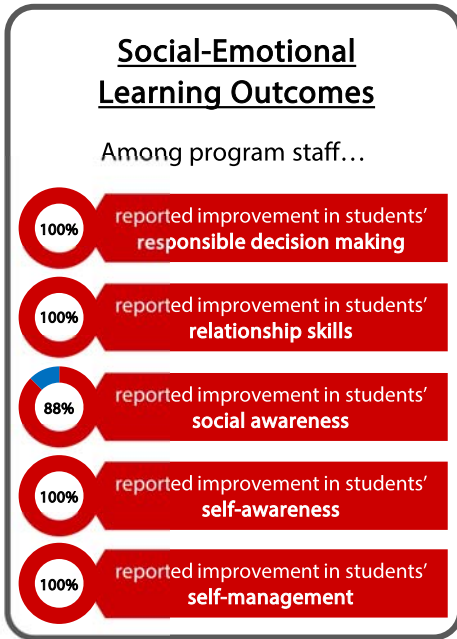
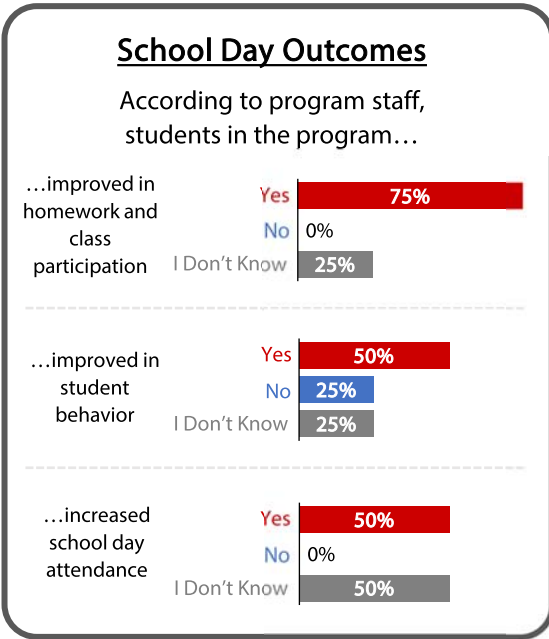
Harwood Elementary (Jefferson School District) 2021-22 Out of School Time Program Data Summary



Harwood Elementary School in Rigby, Idaho, is located within Jefferson School District and serves students from kindergarten through fifth grade. During the 2021-22 school year, the program operated Monday through Thursday until 6:00 p.m., serving an average of 80 students per day through academic support, enrichment activities (e.g., arts/crafts, STEM, music, cooking), and physical activities. All data provided here are based on surveys completed in the Spring of 2022 by 33 family members of participating students and 8 program staff.

The Harwood Program received \$23,842 from the Idaho Out-of-School Network, which was combined with other resources to provide program services for participants during the 2021-22 school year.

Community Needs	Program Priorities	Program Services
Interrupted instructional time during the COVID-19 pandemic.	Implement accelerated learning supports to mitigate learning loss caused by the COVID-19 pandemic.	Small group tutoring and homework assistance for one hour each afternoon led by certified teachers; one-on-one support for students needing specialized instruction.
Increase in mental health needs for students in Jefferson School District.	Implement social-emotional resources and supports for program participants.	Weekly SEL workshops; daily mindfulness and yoga activities; mental health services provided through a local counseling agency.



Most families agree that...

- ...attending this program helped their child **succeed academically** → 91%
- ...their child has **made new friends** in this program → 91%
- ...attending this program **provided new opportunities** for their child → 100%
- ...their child **enjoys attending** the program → 100%



97% Overall Family Satisfaction with the Harwood Program