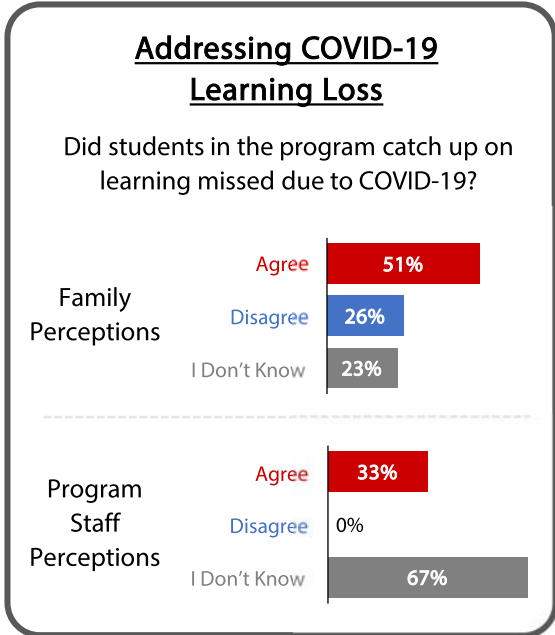
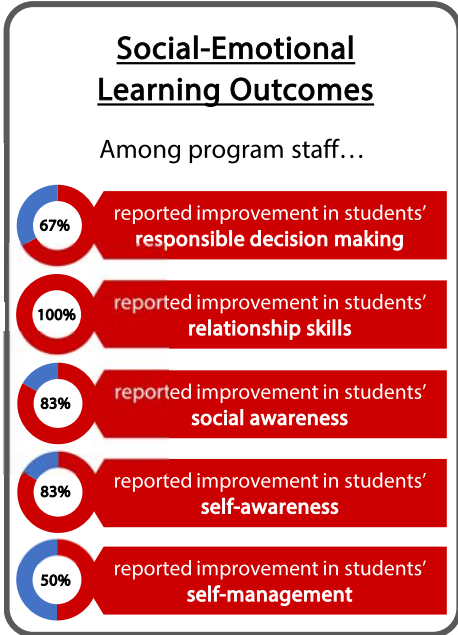
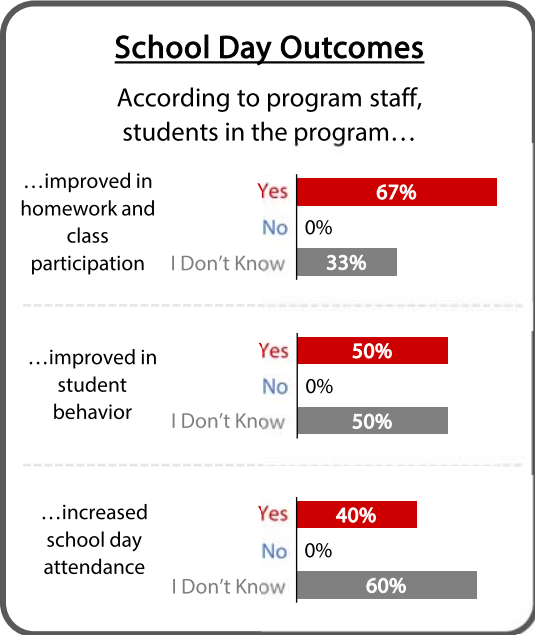




Emmett Middle School in Emmett, Idaho, serves students in grades six through eight. During the 2021-22 school year, the program supported an average of 58 students per day and served 306 individual students at least once during the school year. All data provided here are based on surveys completed in the Spring of 2022 by 50 family members of participating students and 6 program staff.

Emmett Middle School received \$45,000 from the Idaho Out-of-School Network, which was combined with other resources to provide program services for participants during the 2021-22 school year and the following summer.

Community Needs	Program Priorities	Program Services
Additional opportunities for students to participate in local out-of-school time programs.	Increase outreach and availability of program services for students (average daily attendance increased from 36 in 2020-21 to 58 in 2021-22).	Flexibility with program services for interested students who were only able to attend periodically due to sports or other clubs; additional community activities for students, such as fishing expeditions and trips to the zoo; variety of enrichment activities to appeal to students' interests, such as cooking and crafts.
Increase in mental health needs and bullying behaviors among students in Emmett Middle School.	Implement bullying education and prevention resources for students.	Weekly social-emotional club for students; bullying prevention curriculum added.



**Most families agree that...**

- ...attending this program helped their child **succeed academically** → 83%
- ...their child has **made new friends** in this program → 71%
- ...attending this program **provided new learning opportunities** for their child → 81%
- ...their child **enjoys attending** the program → 90%



# 85% Overall Family Satisfaction with the Emmett Program