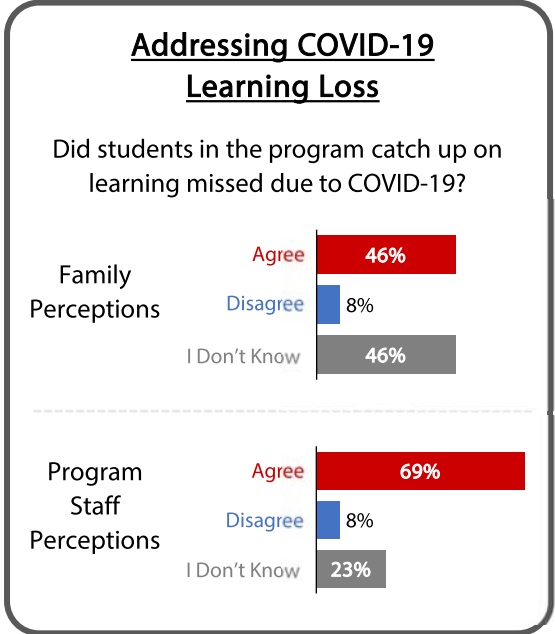
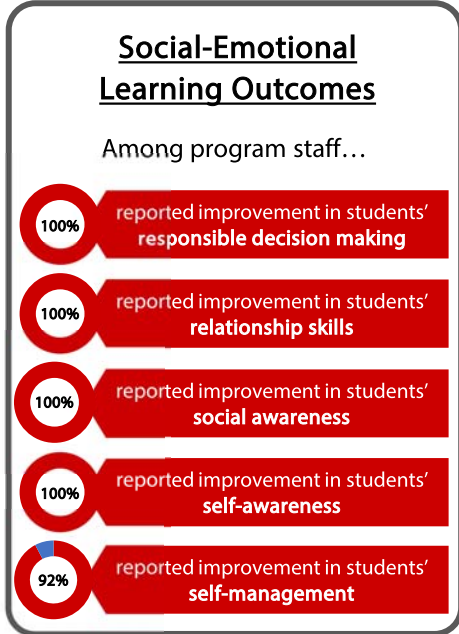
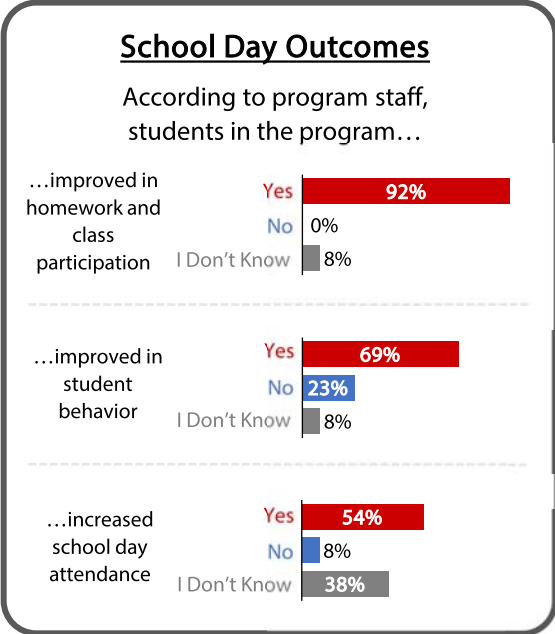




EXPLORE Afterschool Adventures is located within Oneida School District. During the 2021-22 school year, the program served an average of 80 students in grades 1-8 per day to provide additional instructional time for students due to the COVID-19 pandemic. All data provided here are based on surveys completed in the Spring of 2022 by 18 family members of participating students and 13 program staff.

The EXPLORE Program received \$50,000 from the Idaho Out-of-School Network, which was combined with other resources to provide program services for participants during the 2021-22 school year and the following summer.

Community Needs	Program Priorities	Program Services
Interrupted instructional time during the COVID-19 pandemic.	Hire certified teachers to work with students on academic content and assignments.	Certified teachers from each grade provided one-hour homework help to students in their class each day.
Increasing awareness of the importance of STEM exposure for students.	Provide additional STEM resources and activities for students.	STEM related items were purchased for the program's hands-on "makerspace" center (an evidence-based collaborative model for STEM programs) including tables, chairs, 3-D printer and multiple STEM manipulatives for students to use.



Most families agree that...

- ...attending this program helped their child **succeed academically** → 85%
- ...their child has **made new friends** in this program → 92%
- ...attending this program **provided new learning opportunities** for their child → 92%
- ...their child **enjoys attending** the program → 100%



92% Overall Family Satisfaction with the EXPLORE Program