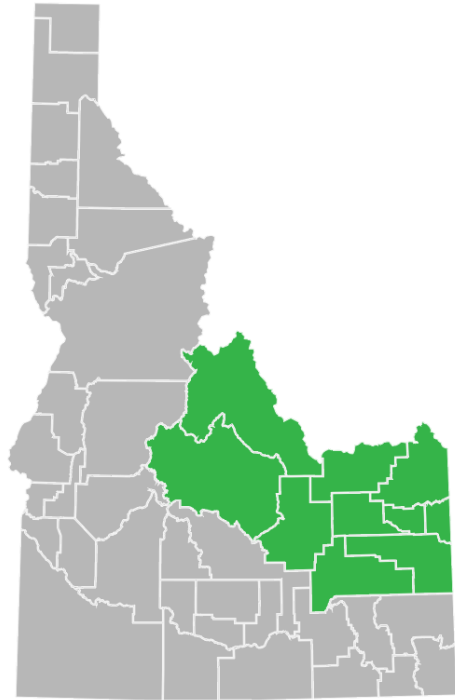


# IDAHO'S REGION 6 OUT-OF-SCHOOL PROGRAMS



Idaho  
Out-of-School  
Network



## What are out-of-school programs?

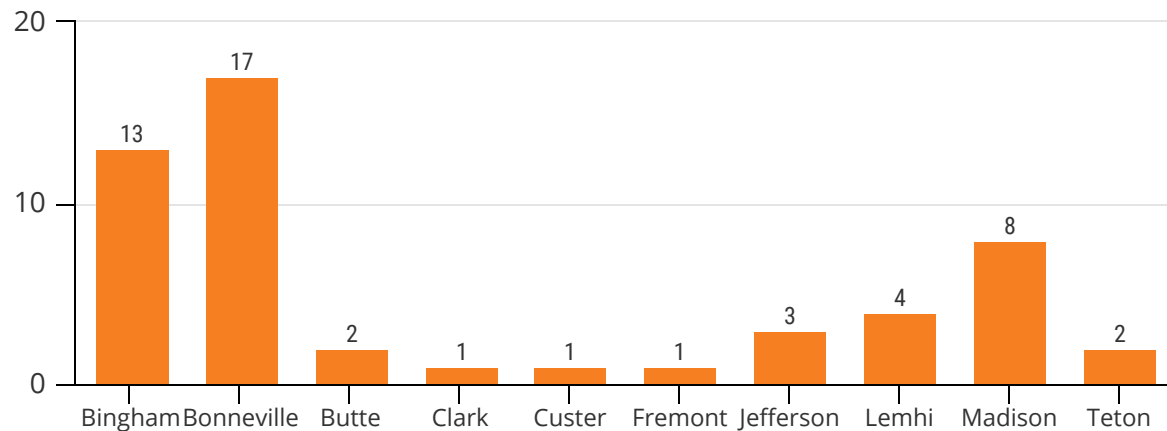
Out-of-school programs include all opportunities and programs available to school-age youth outside of the school day including before school, after school, evening, during school breaks, on weekends, or during the summer. Programs can include one-time opportunities or programming offered on a consistent basis.

The Idaho Out-of-School Network and University of Idaho conducted a survey of 437 out-of-school programs across the state. This fact sheet represents 52 out-of-school programs in **Bingham, Bonneville, Butte, Clark, Custer, Fremont, Jefferson, Lemhi, Madison, and Teton Counties.**

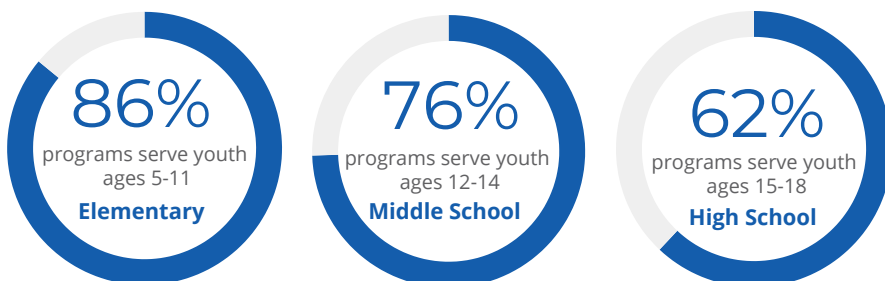
**There is a need for more programs in Idaho's rural counties.**

Most out-of-school programs in Region 6 are provided by schools, libraries, and 4-H.

## Out-of-School Programs in Region 6 by County



## Age Groups Served by Region 6 Out-of-School Programs



Just 11 programs in this region serve all youth ages 5 to 18, creating barriers for families with multiple children of different ages.

**32% of Region 6 programs maintain a wait list.**

## TOP 3 NEEDED RESOURCES



50%  
FUNDING



32%  
PUBLICITY



30%  
STAFF

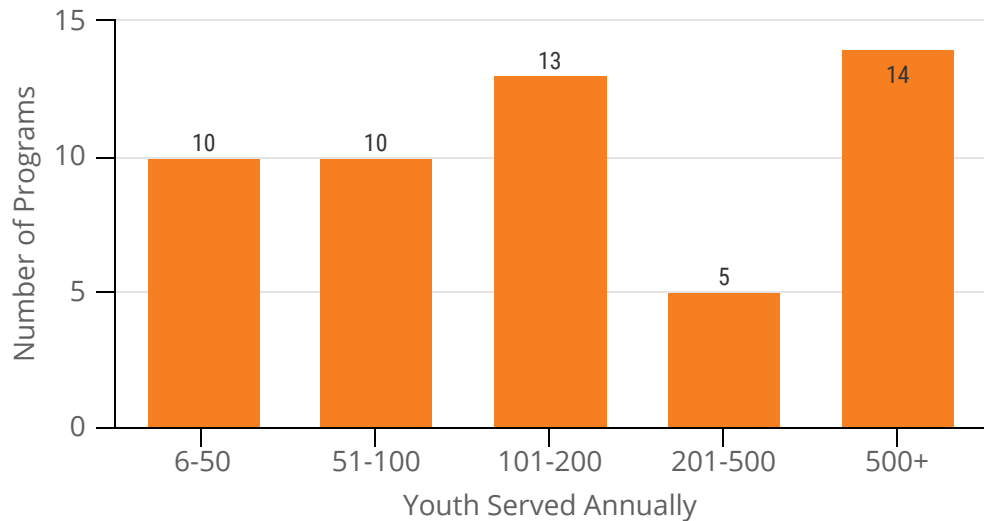
Many programs offer their services free of charge, use a sliding scale, or provide scholarships.

**50% of programs in Region 6 have 3 employees or less**, limiting the number of children that can participate in out-of-school programs.

Out-of-school programs in Region 6 serve more than 10,500 youth each year.

**One in four of these programs serve more than 500 youth each year.**

## Youth Served by Region 6 Programs Annually



## Out-of-school programs help Idaho children and communities thrive by:

- 1 Improving work habits and school grades
- 2 Increasing school attendance
- 3 Increasing likelihood of high school graduation
- 4 Decreasing participation in risky behaviors and crime
- 5 Increasing job retention
- 6 Increasing learning engagement and positive social behavior