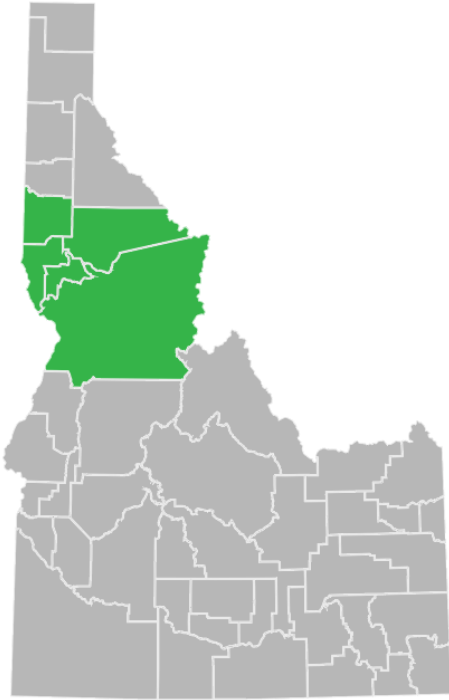


IDAHO'S REGION 2 OUT-OF-SCHOOL PROGRAMS



Idaho
Out-of-School
Network



What are out-of-school programs?

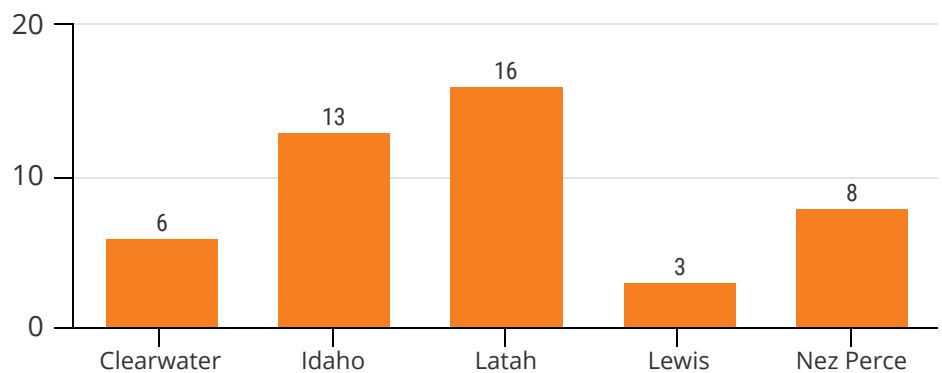
Out-of-school programs include all opportunities and programs available to school-age youth outside of the school day including before school, after school, evening, during school breaks, on weekends, or during the summer. Programs can include one-time opportunities or programming offered on a consistent basis.

The Idaho Out-of-School Network and University of Idaho conducted a survey of 437 out-of-school programs across the state. This fact sheet represents 46 out-of-school programs in **Clearwater, Idaho, Latah, Lewis, and Nez Perce Counties.**

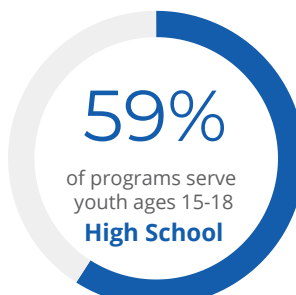
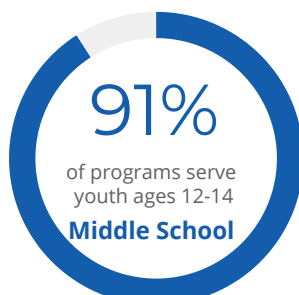
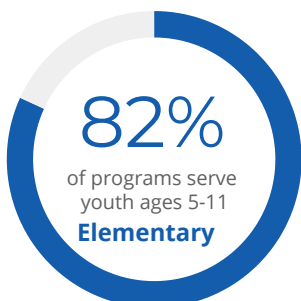
There is a need for more programs in Idaho's rural counties.

Most out-of-school programs in Region 2 are provided by schools, libraries, and 4-H.

Out-of-School Programs in Region 2 by County



Age Groups Served by Region 2 Out-of-School Programs



Just 5 programs in this region serve all youth ages 5 to 18, creating barriers for families with multiple children of different ages.

Nearly one in three Region 2 programs maintain a wait list.

IDAHO'S REGION 2 OUT-OF-SCHOOL PROGRAMS

TOP 3 NEEDED RESOURCES



50%
FUNDING



32%
PUBLICITY



30%
STAFF

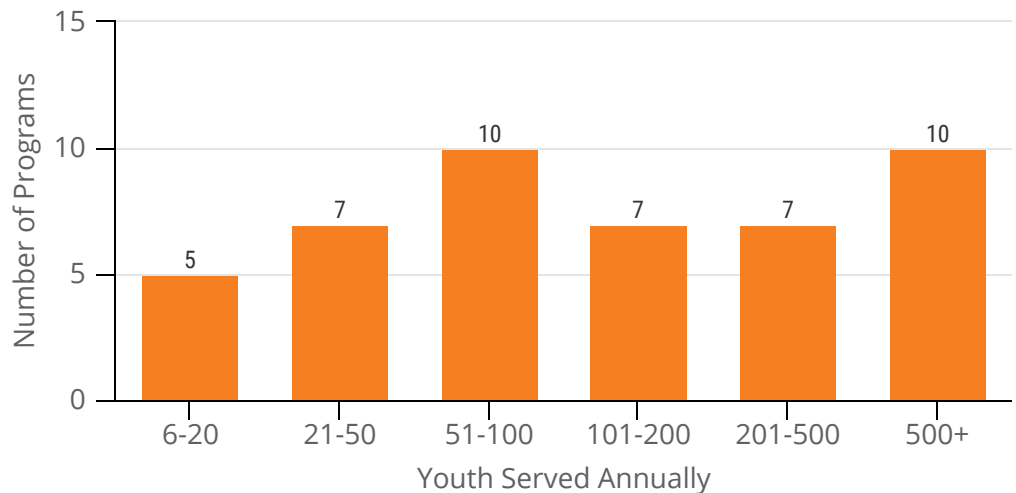
Many programs offer their services free of charge, use a sliding scale, or provide scholarships.

52% of programs in Region 2 have 2 employees or less, limiting the number of children that can participate in out-of-school programs.

Out-of-school programs in Region 2 serve more than 8,300 youth each year.

One in five of these programs serve more than 500 youth each year.

Youth Served by Region 2 Programs Annually



Out-of-school programs help Idaho children and communities thrive by:

- 1 Improving work habits and school grades
- 2 Increasing school attendance
- 3 Increasing likelihood of high school graduation
- 4 Decreasing participation in risky behaviors and crime
- 5 Increasing job retention
- 6 Increasing learning engagement and positive social behavior