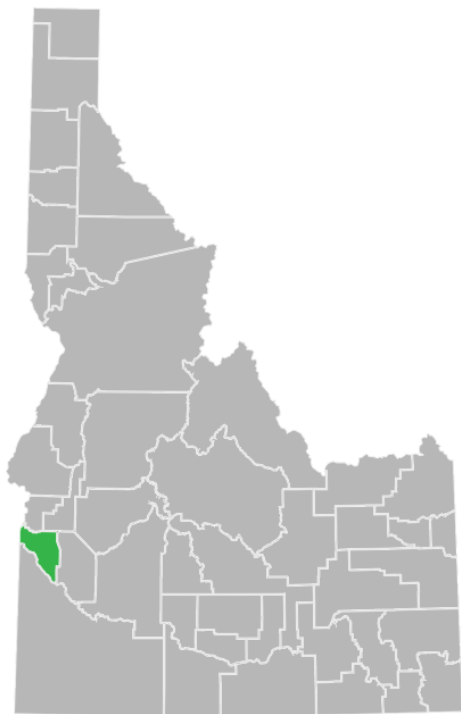


# CANYON COUNTY'S OUT-OF-SCHOOL PROGRAMS



Idaho  
Out-of-School  
Network

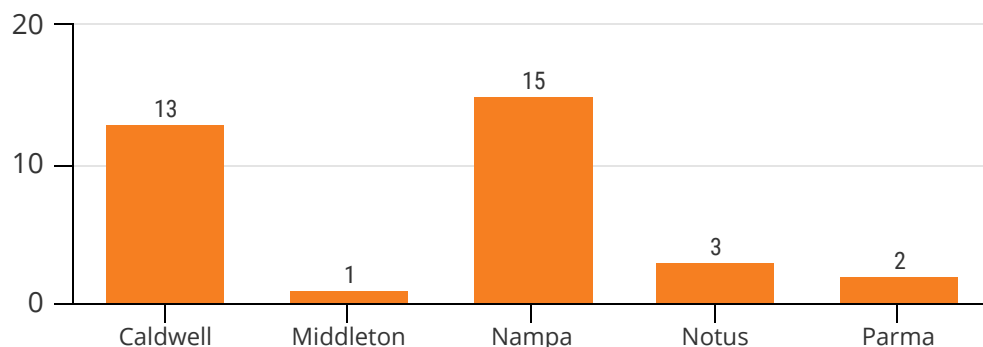


## What are out-of-school programs?

Out-of-school programs include all opportunities and programs available to school-age youth outside of the school day including before school, after school, evening, during school breaks, on weekends, or during the summer. Programs can include one-time opportunities or programming offered on a consistent basis.

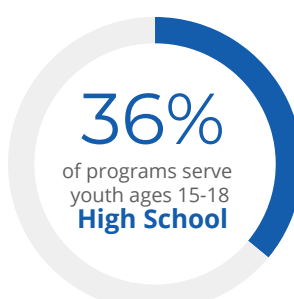
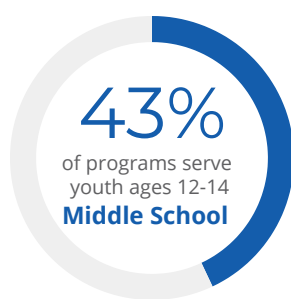
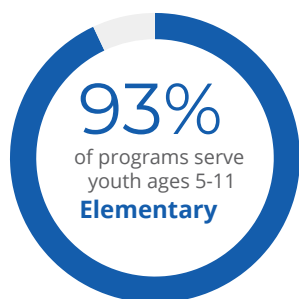
The Idaho Out-of-School Network and University of Idaho conducted a survey of 437 out-of-school programs across the state. This fact sheet represents 34 out-of-school programs in **Canyon County**.

## Out-of-School Programs in Canyon County



Most out-of-school programs in Canyon County are provided by schools, libraries, and 4-H.

## Age Groups Served by Canyon County Out-of-School Programs



Just 1 program in this county serves all youth ages 5 to 18, creating barriers for families with multiple children of different ages.

**47% of Canyon County programs maintain a wait list.**

# CANYON COUNTY'S OUT-OF-SCHOOL PROGRAMS

## TOP 3 NEEDED RESOURCES



38%  
**FUNDING**



38%  
**STAFF**



31%  
**SPACE**

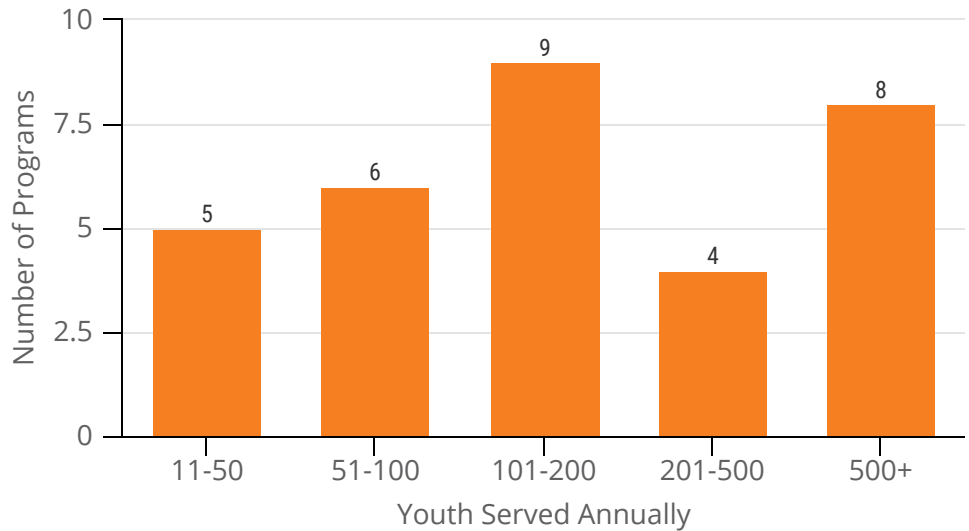
Many programs offer their services free of charge, use a sliding scale, or provide scholarships.

**52% of programs in Canyon County have 3 employees or less,** limiting the number of children that can participate in out-of-school programs.

Out-of-school programs in Canyon County serve more than 6,400 youth each year.

**More than one in four of these programs serve more than 500 youth each year.**

## Youth Served by Canyon County Programs Annually



## Out-of-school programs help Idaho children and communities thrive by:

- 1 Improving work habits and school grades
- 2 Increasing school attendance
- 3 Increasing likelihood of high school graduation
- 4 Decreasing participation in risky behaviors and crime
- 5 Increasing job retention
- 6 Increasing learning engagement and positive social behavior